



Proud member of IPMS USA <http://ipmsusa.org>

[www.lisms-ipms.org](http://www.lisms-ipms.org)

# RED, WHITE & SPRUE

Volume 24 Number 11

★ LISMS NEWSLETTER ★

November 2017

**Kit Review**

**1/20th Revival 1939 Mercedes-Benz W163 Grand Prix racer**

**Photo Essay**

**Boeing P-12E • Seen on the Table • Model Clinic**







Next meeting date:  
**Monday, November 20<sup>th</sup>**  
**7:30 pm to 10 pm**

Levittown Public Library  
1 Bluegrass Lane, Levittown, NY

## Executive Board

President: Robert DeMaio  
631 707-3442  
[taurleo@optonline.net](mailto:taurleo@optonline.net)

1st Vice President: Fred Seitz  
516-581-1990  
[seitzfjs3@gmail.com](mailto:seitzfjs3@gmail.com)

2nd Vice President: Tim Kelly  
516-621-0184  
[timothykly@aol.com](mailto:timothykly@aol.com)

Corresponding Secretary: Fred Seitz  
631 581-1990  
[seitzfjs3@gmail.com](mailto:seitzfjs3@gmail.com)

Secretary: Doug Tantillo  
516-541-7576  
[dtantill@optonline.net](mailto:dtantill@optonline.net)

Editor: Steve Muth  
516 671-9456  
[sgmuth@optonline.net](mailto:sgmuth@optonline.net)

Graphic Design: Al Zygier  
917-832-7054  
[azygier@icloud.com](mailto:azygier@icloud.com)



**Model:** 1/24 Revell Corvette C-6R  
by Rich Caserma.

**Photo:** Steve Muth



Thank you Bill for the informative clinic on brush painting. I'm anxious to try it but I have planned a couple of other models to do. Maybe I'll change the order of builds around some. I was going to ask Steve Andreano to show his historical travel pictures but something came up the past two weeks. Another lady called me to donate about 67 models, about half aircraft and armor with 8 car kits, from her departed husband. I took the time to wipe the dust off each box with a damp

cloth. Then I quickly inspected the opened kits to see if they were started or all there. Most kits are still in shrink wrap. No Hasegawa, there are Tamiya 1/35, Revell 1/72 and 1/32, AMT, and a few others. I will try taking time to put a price on the panel of each one from \$3.00 to \$12. The money collected will go in our treasury. Bring money guys! To be fair I will open the cartons after 7:30pm so more members will have time to arrive.

Hey! Are you getting Newsday papers? Every three months they are printing an extra paper of the past at no charge. This month is a Nassau County October 22, 1942 paper with a headline: "U.S. Admits Tokio Flyers Missing", the Doolittle Raiders. Yep Tokio spelled that way. The second headline is "Reds Storm Nazi Second Defense Line in Blizzard", takes place at Stalingrad. I've been so busy I haven't been able to sit down to enjoy the read. Get this, the paper was 3 cents, very limited on pictures at the time and lots of advertisement pencil line drawings. Next month I will have an interesting brief story to tell about this.

Get your Black Friday Squadron list ready! You must have your list to Doug by the Sunday before Thanksgiving. Members of previous participants know the routine. New members can ask Doug how it works. I repeat, you must be a paid up member and you also get to participate in the Holiday Party on Monday December 11th at The American Airpower Museum with great food and comradery. Your wife and immediate family are invited. I will send out an e-mail soon to ask if you're joining in and how many attending. We must know to order food.

The HVHMG show in Poughkeepsie was nice as usual. They have increased their vendor participation and sold out of tables. Hardly any of our chapter members attended this year. Nice show as usual guys! Thank you.

I met our Regional Coordinator Dave there and had a good conversation. He informed me that next year the NENY chapter in Albany is looking to host Noreastcon 48. They have a hotel picked out. Noreastcon 49 is open for dibs, and NENY asked to reserve the 50th for them to host.

Check out our website people! Noreastcon 47 update! I have posted the rules, categories, and model forms. Also, arrangements with the Holiday Garden Inn on Round Swamp Road for rooms at discount rates. New flyers have been printed with rules and categories on the back. Yes corrections have been made on the front. I will have them at the meeting. Please, if you distributed any swap them out with these new flyers. Thank you.

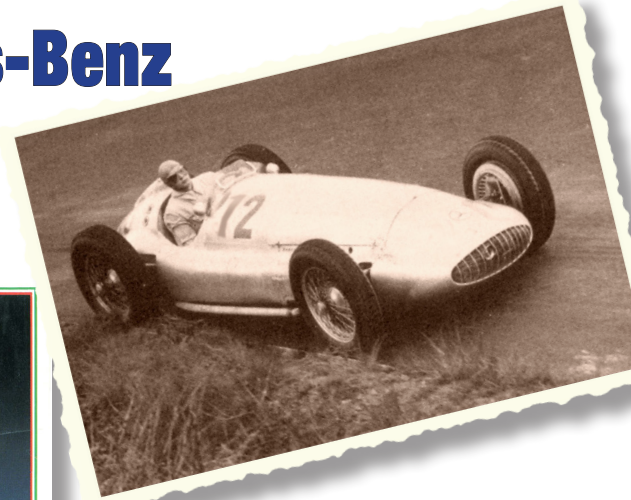
Keep our hobby alive and well!





## 1/20th Revival 1939 Mercedes-Benz W163 Grand Prix racer.

by Steve Muth



for one car, #12. The tires are rubber with "Continental" embossed on them. The spoked wheels are in black ABS plastic and look good but probably would benefit by using aftermarket PE and turned metal wheels. All told, there are 140 parts plus a large assortment of very small nut and bolts. There are 72 black ABS plastic parts, 31 silver, 22 black rubber plus 4 tires, 10 metal parts (mostly for the Chassis) and one



I believe the kit really depicts the W154 Grand Prix car of 1938 - 1939. I have not been able to identify a W163. The closest reference is to the W154 with a M163 engine. The M163 was the engine fitted in late 1938 or early 1939. It differed from the M154 engine in having a single roots type two stage supercharger rather than two roots type single stage superchargers; one feeding the other. It was found that the two-stage setup had less losses and gave more power. The kit seems to have two roots type superchargers. In the event, Grand Prix racing was discontinued in mid 1939 due to the war. So... the W154 with the M154 engine is more representative of the last prewar Mercedes-Benz Grand Prix racer.

The kit is packaged in a sturdy top opening corrugated cardboard box with nice artwork on the top and ends. There is one large folded instruction sheet and one smaller (~8X10). There are 8 exploded view assembly diagrams. The decal sheet contains instrument dials and numbers

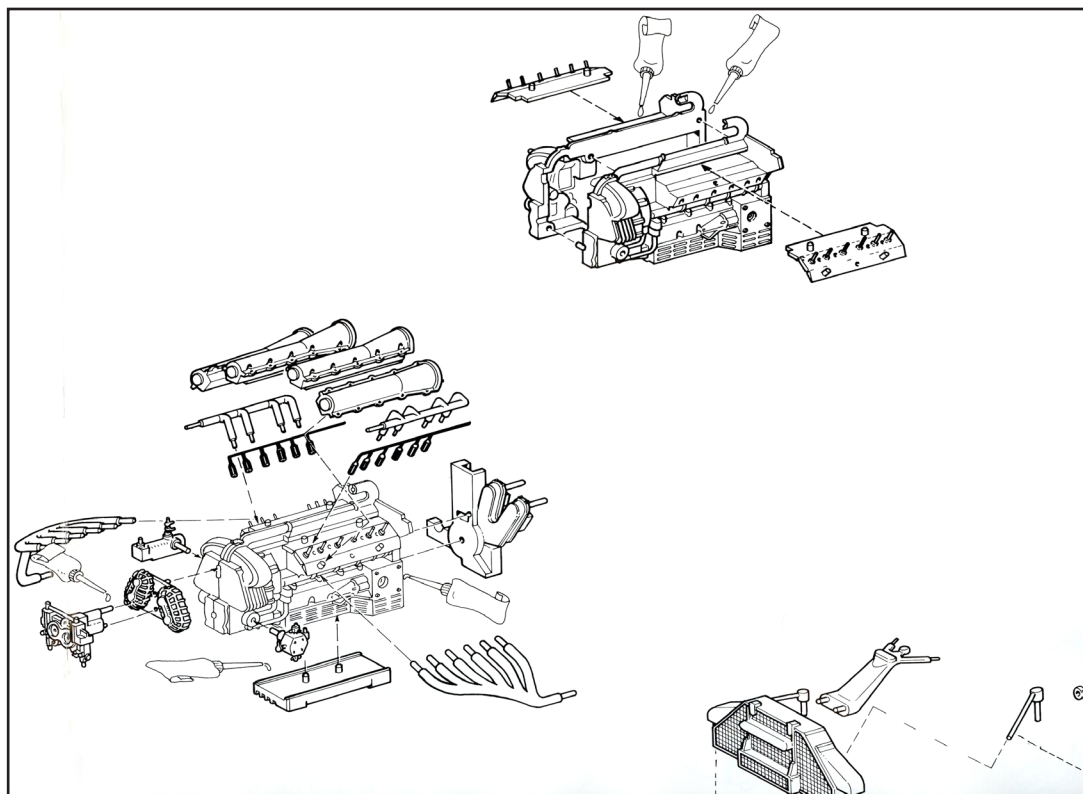
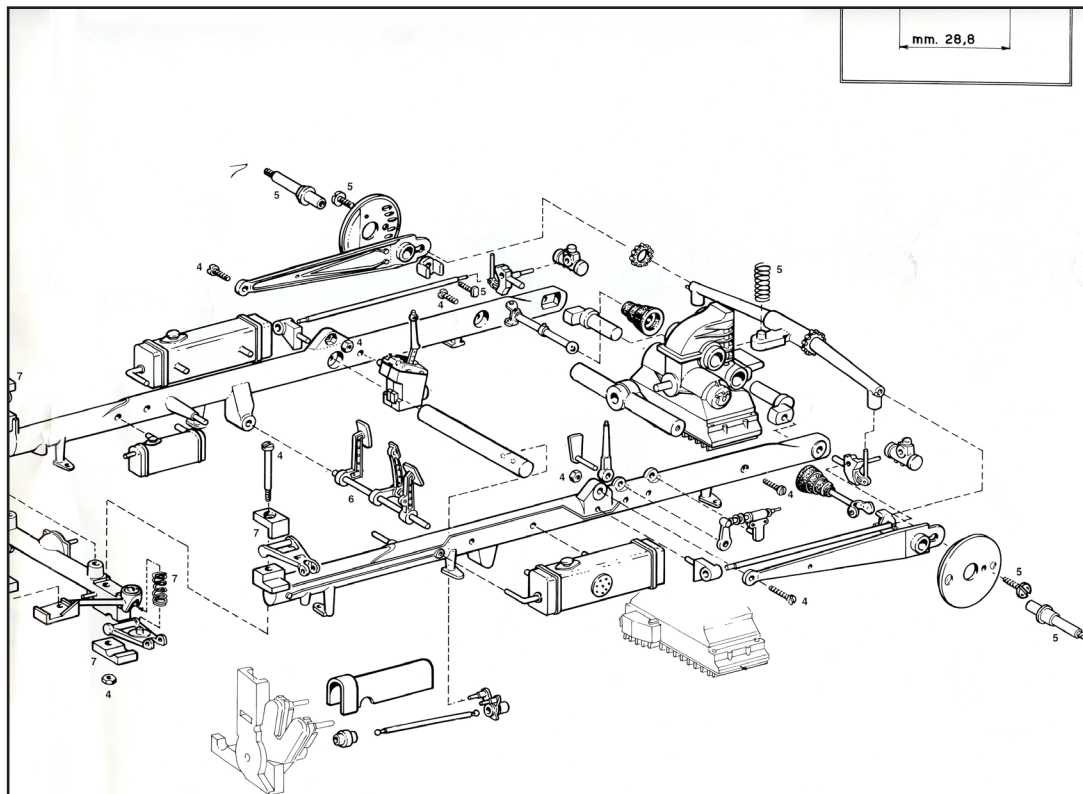
clear part for the windshield. It is all packed in 9 plastic bags, plus three loose sprues for the larger body parts. The "wire" wheels are of plastic but look nice and crisp. All the molded parts look crisp, even the small parts, but the sprue gates are rather large; which will require careful removal from the sprues. There is very little flash and I could see no injection pin marks. The grill is molded exceptionally well. According to instructions very little gluing is required as most parts are screwed or snap-fit together. There is no P.E. or resin and no figures.

From comments on the web, the fit of many of the parts is not the greatest and will require considerable clean up with a file for fit. Aside from some 1/43 kits there does not seem to be any larger scale kits of the W154/163 around. However, Revival kits are still available with prices between \$100 - 250. Recommended if you just have to have a W154 Grand Prix Racer and don't mind a little old fashion model building. 🛠️

*continued on page 4*

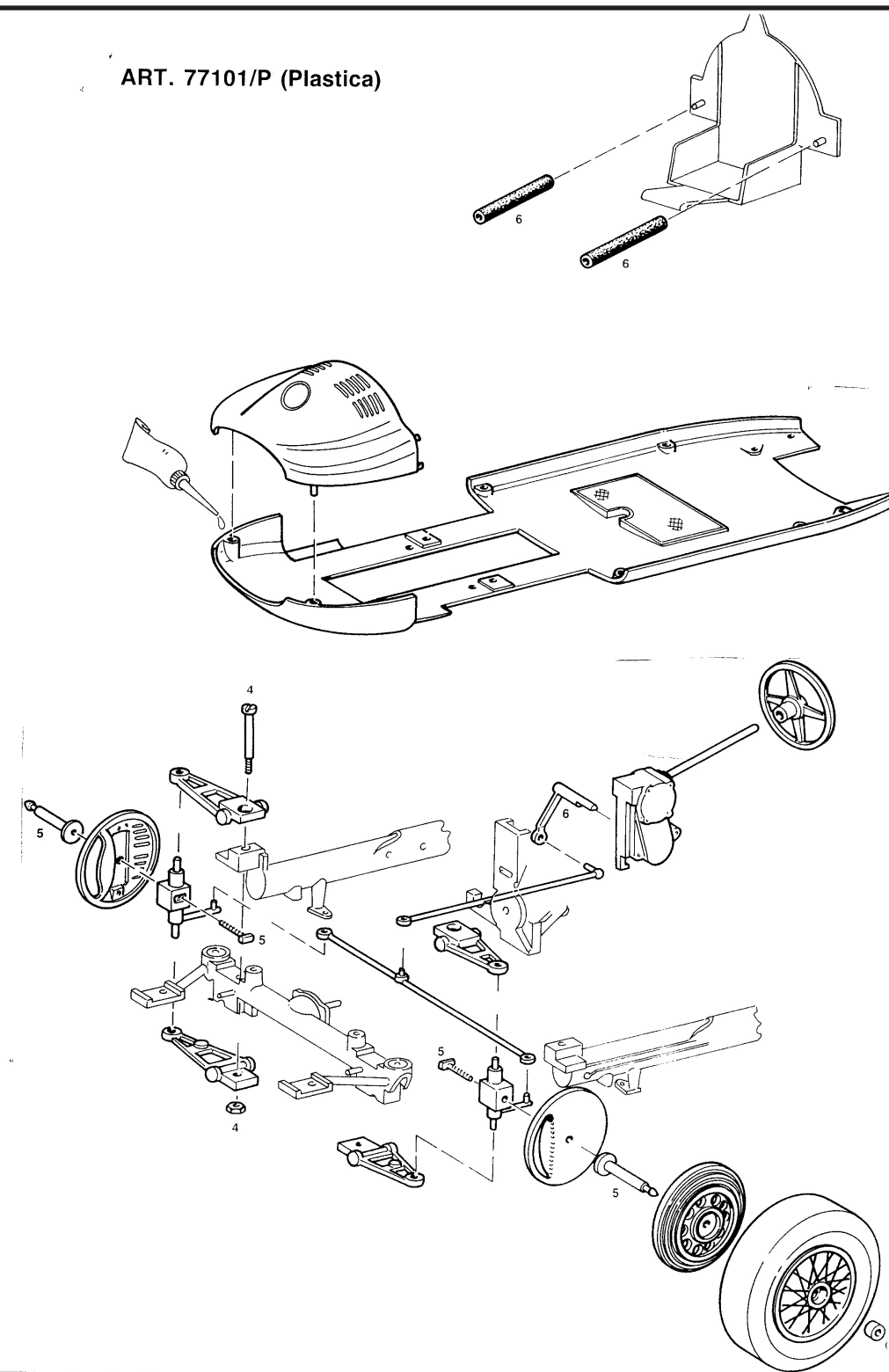


*continued from page 3*





ART. 77101/P (Plastica)





## Boeing P-12E

by Steve Muth

This essay is on the P-12E at the Planes of Fame Air Museum at Chino, CA. At the time it was photographed it was painted as an F4B. During 1940 and 1941 it was allocated to California Polytechnic Institute as a non-flying class-room aid. It was rescued and restored to

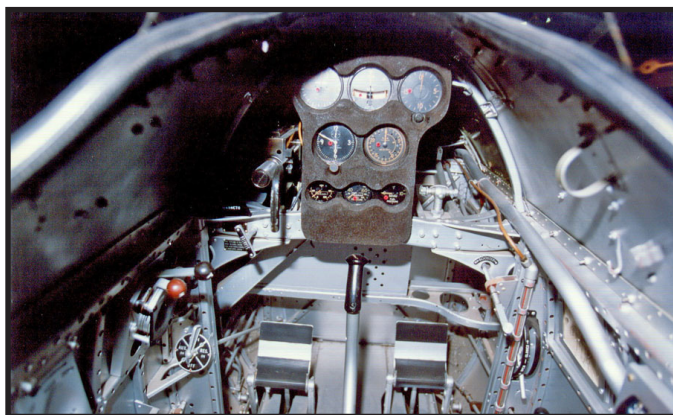
display condition then made flyable in 1961 and again in the 1980s. The S/N is 32-17 and has a registration number N3360G. It was photographed in 1997. There is one other P-12E that is at the National Museum of the USAF in Dayton, OH. 🛩



*Left side view of the P-12E at the National Museum of the USAF outside Dayton, OH*



*Planes of Fame P-12E cockpit looking forward.*



*NMUSAF Archival photo of the P-12E instrument panel.*



*Cockpit right side*



*Carb left from*



*Headrest from the left.*

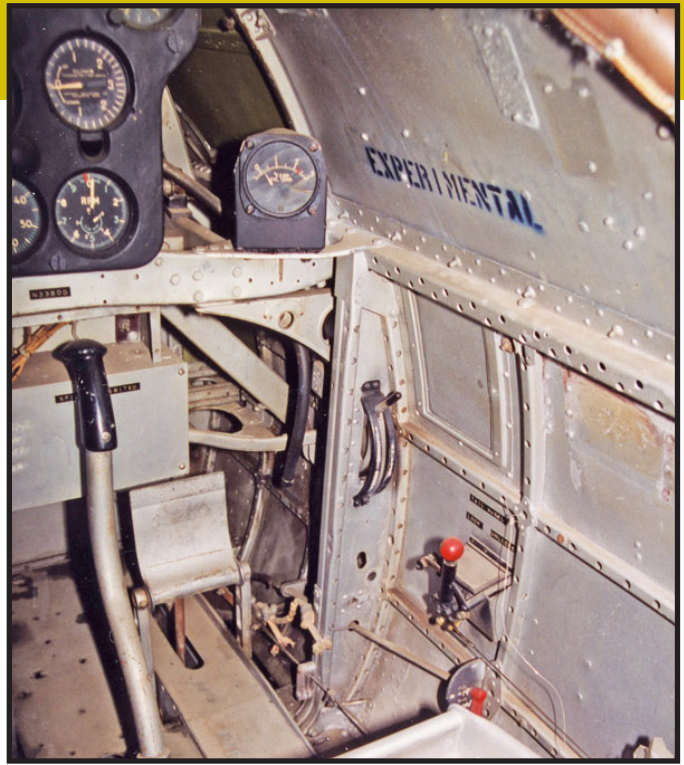


*Oil cooler.*





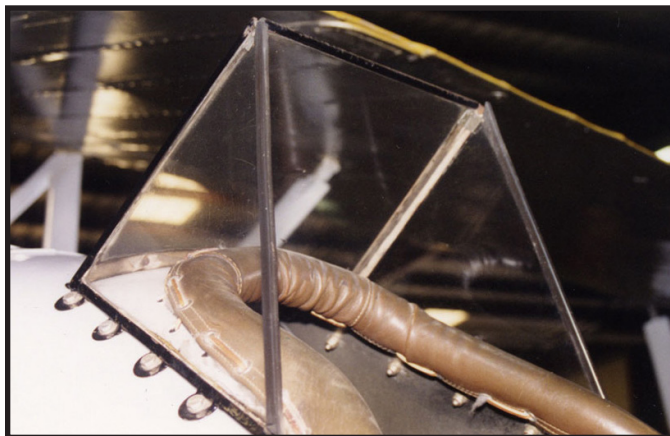
*Cockpit left forward view.*



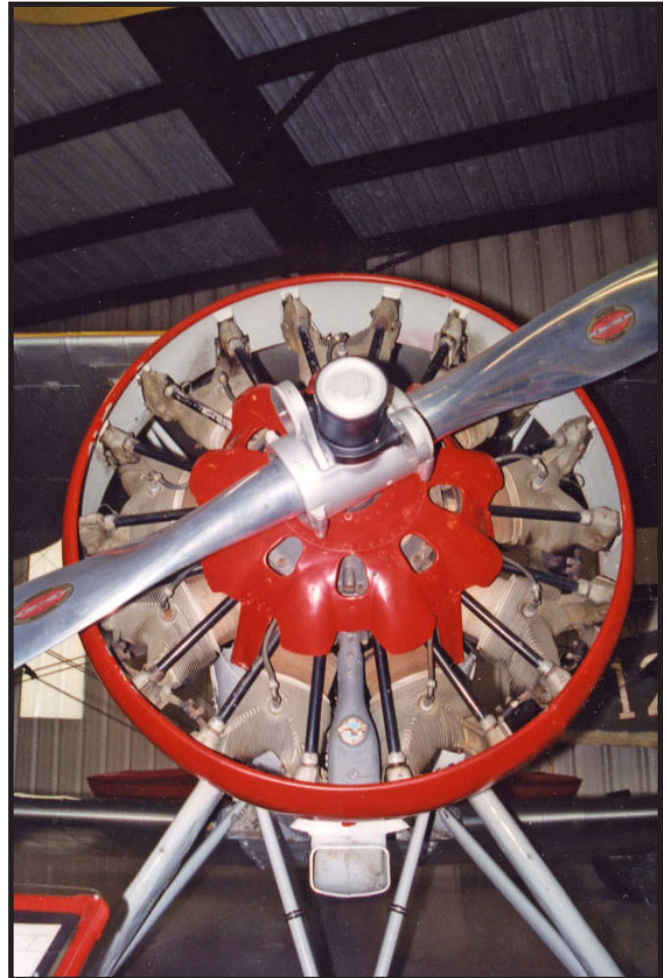
*Cockpit right forward view.*



*Tail wheel left side.*



*Windscreen interior.*



*Engine face.*

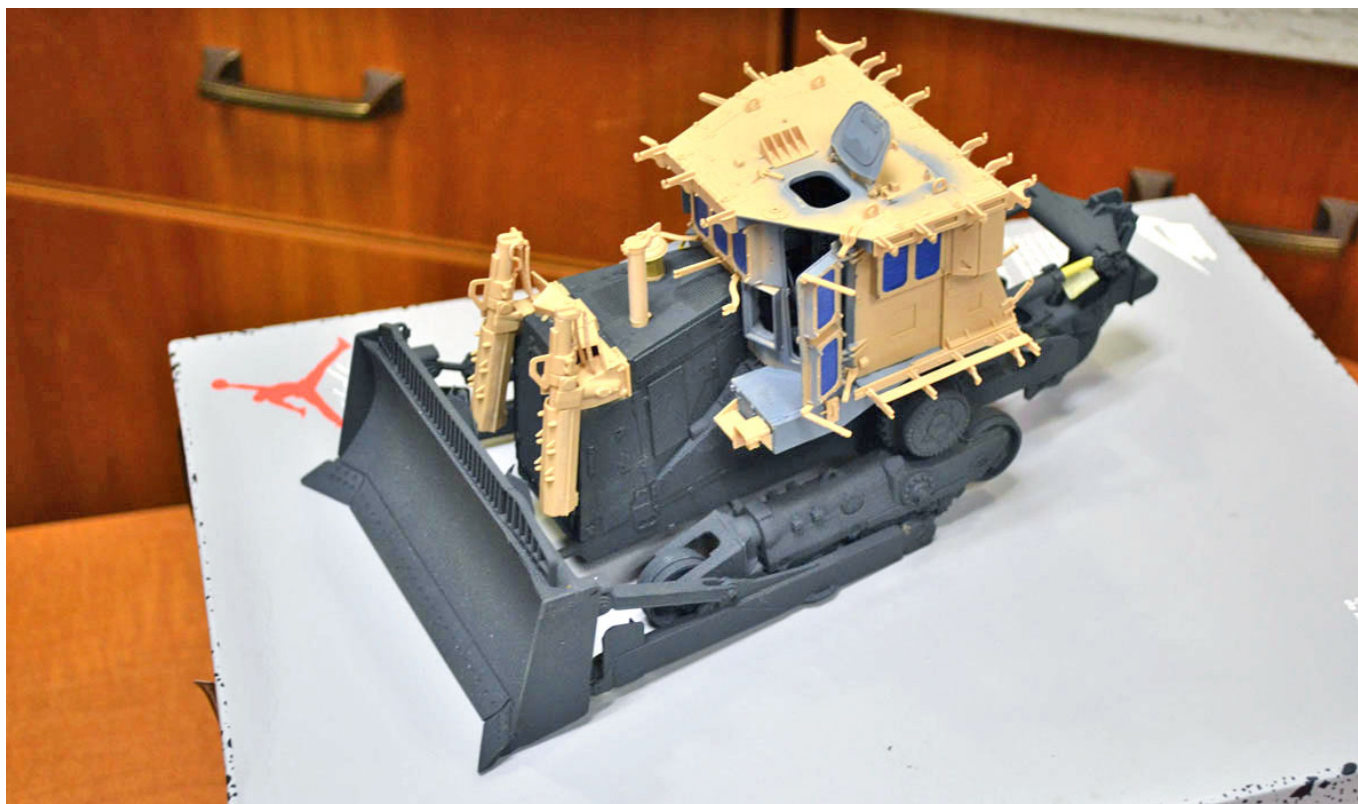




## SEEN ON THE TABLE-10/16/17

There were 8 models on the table in September. Some were in progress, some were completed. Noticeably missing were ships, sci-fi and figures. Mostly armor. Only two aircraft – Ray

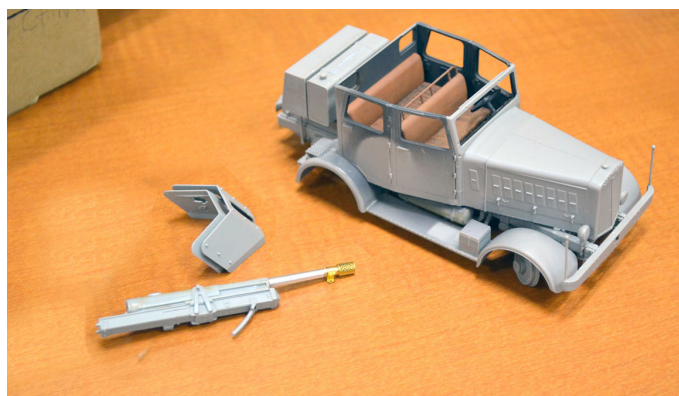
O'Neill's SC-1 and SOC-2 seaplanes. There were a few nice cars by Rich Caserma too. Enjoy! 🍷



*Far out bulldozer brought by Jim Lisa.*



*1/35th Churchill tank as work in process brought by Jim Guld.*



*Steve Andreano's 1/35 Hannomag and gun are still a work in process.*





Ray O'Niell brought his 1/72 Curtiss SC-1 seaplane.



Ray also brought his Curtiss SOC-1 seaplane.



Nice '32 Ford roadster in 1/24th scale by Rich Caserma.



Rich also brought his 1/24th Revell C-6R Corvette.



1/35 Dragon Sd.Kfz. 251 AUSE.C with a 32cm WK F1 by Bob DeMaio.



VETERANS DAY!





## Brush Painting with Vallejo paints

by Bill Koppos

At the 10-16-17 meeting Bill Koppos demonstrated his techniques for brush painting with Vallejo water based paints. I, for one, found it very useful and plan to use some of his methods in the future. This article will just give the highlights of his demonstration since I was trying to learn/remember and write at the same time. It was like trying to chew gum and tie my shoelaces at the same time.

Anyway,... some highlights and pointers – Bill uses Model Master enamels for his base paint as it is tough and does not react with the Vallejo. Just allow it to dry completely. His demo and techniques were most appropriate for armor but still have a place in certain aircraft applications. When applied in multiple (usually two) coats brush marks were not apparent. His demo centered on free hand painting of camouflage patterns on wings and armor models. He stressed using thinned paint and multiple coats; usually two. He mixed his paint on a plastic pallet (in this case a hotel key card) as he needed it and determined the color by eye and matched it by eye

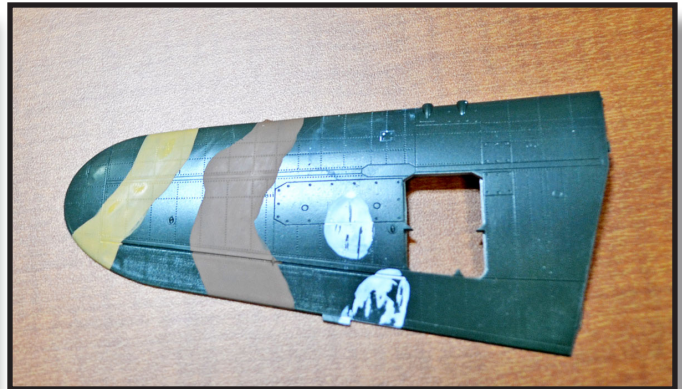
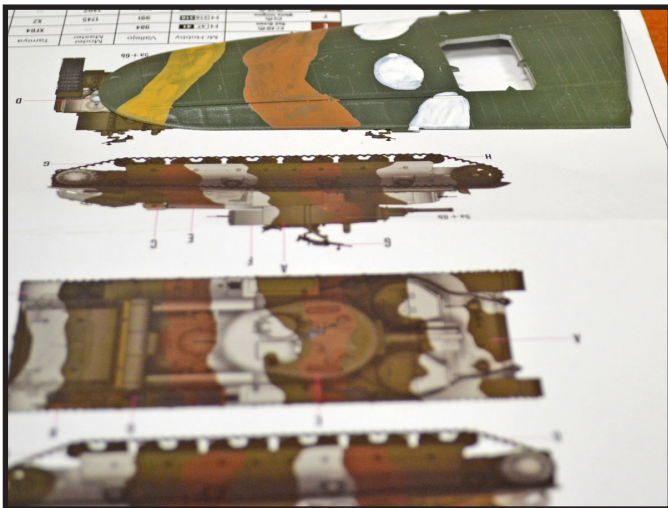
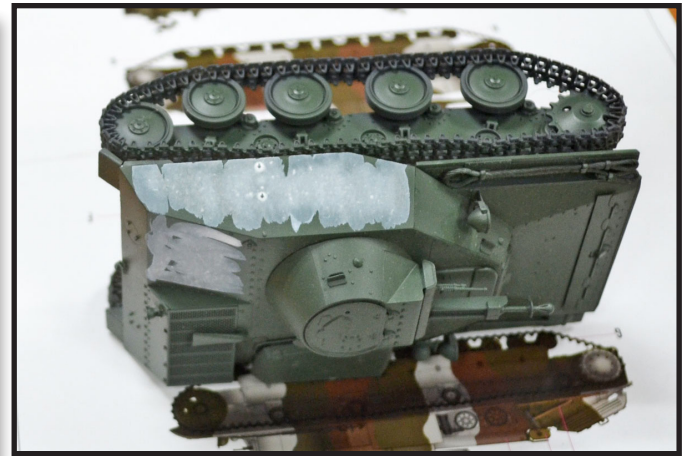
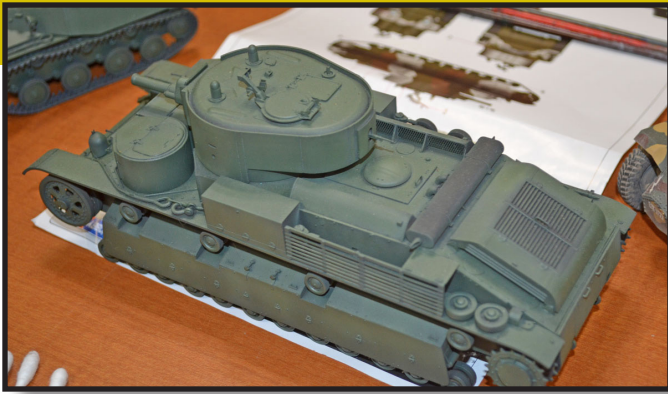
when he ran out. You really couldn't tell the difference. He tried to match the color to the illustration he used. He painted the edges of the area to be colored then filled it in, letting it dry before the next coat. The paint was thinned just enough to retain the color. If your paint is too thick or dense you will get brush marks.

To distress the paint, the paint must be dry but not yet cured (that is dry to the touch). You can use almost anything – a stiff tooth brush or a cloth dampened with Windex. You must go slowly to prevent the paint coming off in sheets rather than just being abraded. Bill also demoed Tamiya textured paint- in this case Powdered Snow Effect – White. This stuff really works! Clean up couldn't be easier. Just wash with water and a little detergent. As long as you have kept the brush wet it will clean beautifully. Errors or mistakes can be corrected easily too with water and a little Windex.

In the samples he brought and used, it looked very good and the paint did not obscure the panel detail on the wing. 🚀









## Show Calendar Listing for 2017

See Bob DeMaio for details

| Date          | Event & Location                                                                                    | Website                                                                                             | Day     |
|---------------|-----------------------------------------------------------------------------------------------------|-----------------------------------------------------------------------------------------------------|---------|
| Nov. 11       | IARS<br>Freeport Recreation Center<br>130 East Merrick Rd.<br>Freeport, NY 11520                    | <a href="http://www.wix.com/liarsmodelcarclub/liars">http://www.wix.com/liarsmodelcarclub/liars</a> | Sat     |
| Nov. 18       | Long Island Figure Show<br>Freeport Recreation Center<br>130 East Merrick Rd.<br>Freeport, NY 11520 | <a href="http://www.longislandmodelsoldiers.com">http://www.longislandmodelsoldiers.com</a>         | Sat     |
| April 7, 2018 | Mosquitocon<br>1 Pal Dr.<br>Wayne, NJ HYPERLINK                                                     | <a href="http://www.ipmsnj.org">http://www.ipmsnj.org</a>                                           | Sat     |
| April 27 & 28 | 2018Noreastcon 47<br>Museum of American Armor<br>Round Swamp Rd.<br>Bethpage, NY HYPERLINK          | <a href="http://www.lisms-ipms.org">http://www.lisms-ipms.org</a>                                   | Fri-Sat |



*Audie Murphy, the most decorated  
US soldier in WWII.*

# A Salute to all our Veterans!

## SUPPORT YOUR LOCAL HOBBY SHOP

The following Hobby Shops have supported us and are supporting us by paying for ad space here and on our web. Some have also donated raffle prizes for our meetings and our annual RepLIcon. We owe it to them to patronize their store even if we could buy the item for a slightly lower price mail order or on the web.

And don't forget to mention that you are a member of the LISMS and appreciate his or her support. Everybody likes a thank you.

Depending upon the size of your purchase, these shops have agreed to provide a possible 10% or more discount if you have our membership card.

### Alsand's Toy Soldiers Plus

[www.alsandtoyandsoldier.com](http://www.alsandtoyandsoldier.com)

**Alan & Sandy**, Shop closed. On line orders only at this time.

### Baseline Model Inc.

**Eric**, 250 Little East Neck Rd., West Babylon, NY 11704, (631) 376-0060, Military Model Specialist, old and new kits bought and sold. Retail and Mail Orders. Closed Mondays.

### Get It On Paper

**Gary Weickert**, 185 Maple St., Islip, NY 11751, (631) 581-3897, open every Saturday noon to 5 PM. - Vintage Toys & Model Kits, Automobilia & auto Literature. Model kits wanted.

### Men-At-Arms Hobbies

**James Katona**, 134 Middle Country Rd. (Rt. 25), Middle Island, NY (631) 924-0583- Excellent selection of lead miniatures-Historical and Fantasy. Plastic Models, War games & Modeling supplies. Books and Magazines.

### The Marx-Man

**John Stengel**, (718) 418-9439 - We carry an array of toy soldiers in plastic and metal, from HO to 54 mm/60 mm. Die cast vehicles and Dragon action figures.

### Trainville Hobby Depot

Weekend shows only: website: [www.trainville.com](http://www.trainville.com) and e-mail: [info@trainville.com](mailto:info@trainville.com)





## IPMS /USA MEMBERSHIP FORM

Not an IPMS member? Need to renew your standing? You can clip out and mail in the form, download a fill-in copy from the [LISMS.org](http://www.lisms.org) web site or visit the IPMS store at <http://www.ipmsusa2.org/store> to submit your application on-line.

IPMS #

Name:

Address:

City/State:

Zip:

E-Mail:

Phone:

Signature (required by P.O.)

Type of membership

☐ Adult 1 year \$30.00 ☐ Adult 2 years \$58.00 ☐ Adult 3 years \$86.00

☐ Junior (under 18 yrs) \$17.00

☐ Family, 1 yr \$35 (Adult + \$5, Ones set Journal) How Many Cards?

☐ Canada & Mexico: \$35 ☐ Other/Foreign: \$38 (Surface)

Checks must be drawn on a US Bank or International Money Order

### PAYMENT OPTIONS:

☐ Check

☐ Money Order

☐ Credit Card

Credit Card:



☐ Master Card



☐ Visa



☐ Discover

Card Number:

Exp. Date:

Chapter Affiliation (if any):

If Recommended by an IPMS Member, Please List His/Her Name and Number:

Name:

Number:



Mail Application to: IPMS/USA, Dept. H, PO Box 2475, North Canton, OH 44720-0475